

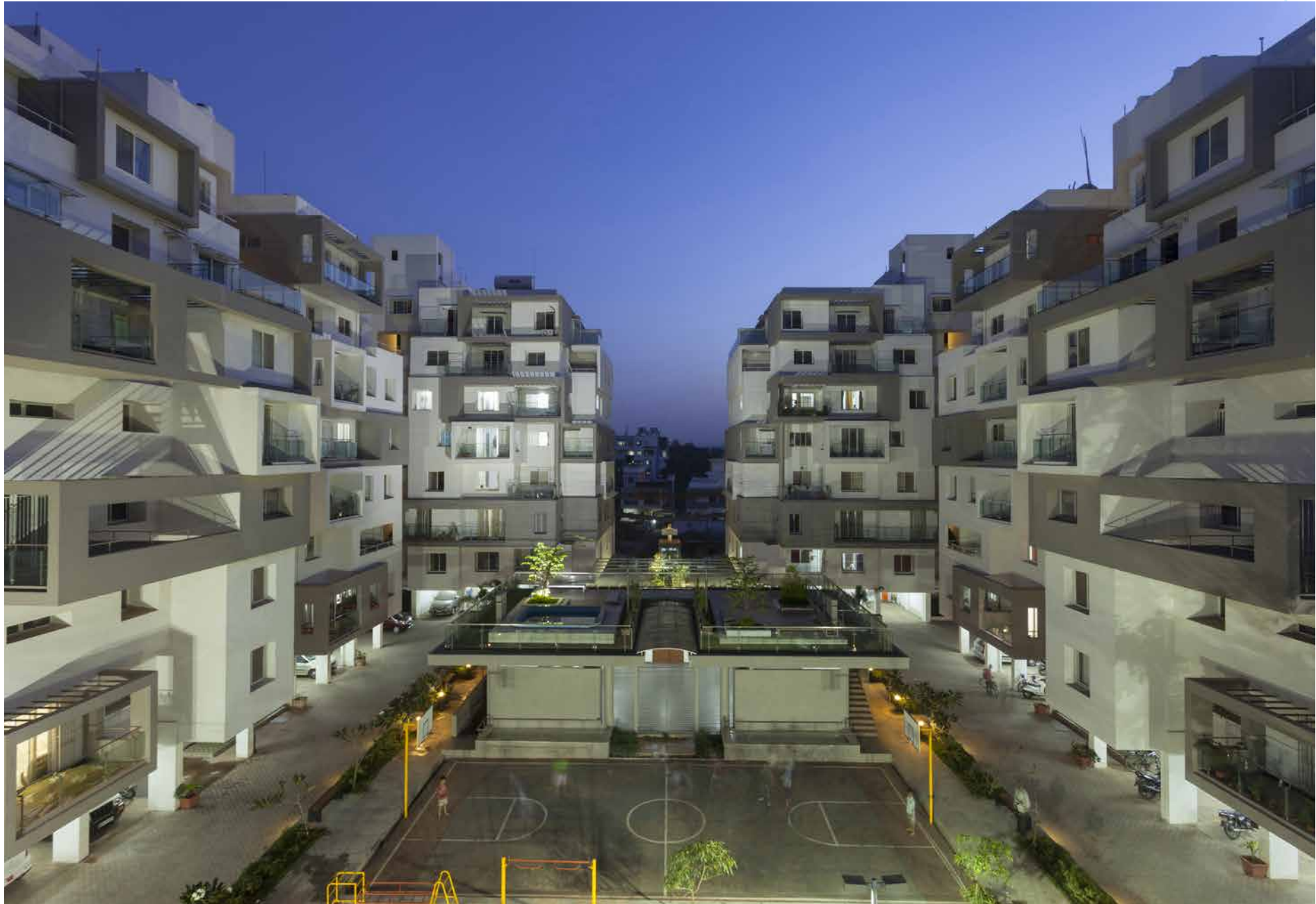
CONTEMPORARY FACADES

TOP INDIAN RESIDENTIAL SPACES EXTERIORS + INTERIORS



IAG

INTERIOR ARCHITECTURE GROUP



Client- Bhima Mahabharat Builders / Project Location- Kolhapur, Maharashtra, India / Built up Area- 9003 sq mtr

Photography Courtesy- Sanjay Chougule, Image Courtesy- Abhijit Magdum, Bhima Mahabharat Builders

Other Consultants- Bhima Mahabharat Builders (Civil Contractors) & Prashant Kapadi for Vision Associates (Principal Architect)



Bhima Mahabharat Builders

Location- Kolhapur, Maharashtra, India

Website- www.bhimabuilders.com

Designer Incharge- Abhijit Magdum

Design Team- Abhijeet Magdum(Director), Jayesh Kadam(Director) & Prashant Kapdi

COMPANY PROFILE

With over a decade of experience redefining the residential and commercial constructions in Kolhapur, the firm, Bhima Mahabharat Builders, is the brainchild of Mr. Abhijit Magdum and Mr. Jayesh Kadam. Their entrepreneurial enthusiasm is the main driving force behind the success of the firm. With various construction projects already completed, the name, Bhima Mahabharat Builders, has become synonymous with high quality and innovation. The firm today consists of 35 young, enthusiastic, energetic professionals in the fields of Engineering, Architects et cetera, led by the directors.

Wind Gates

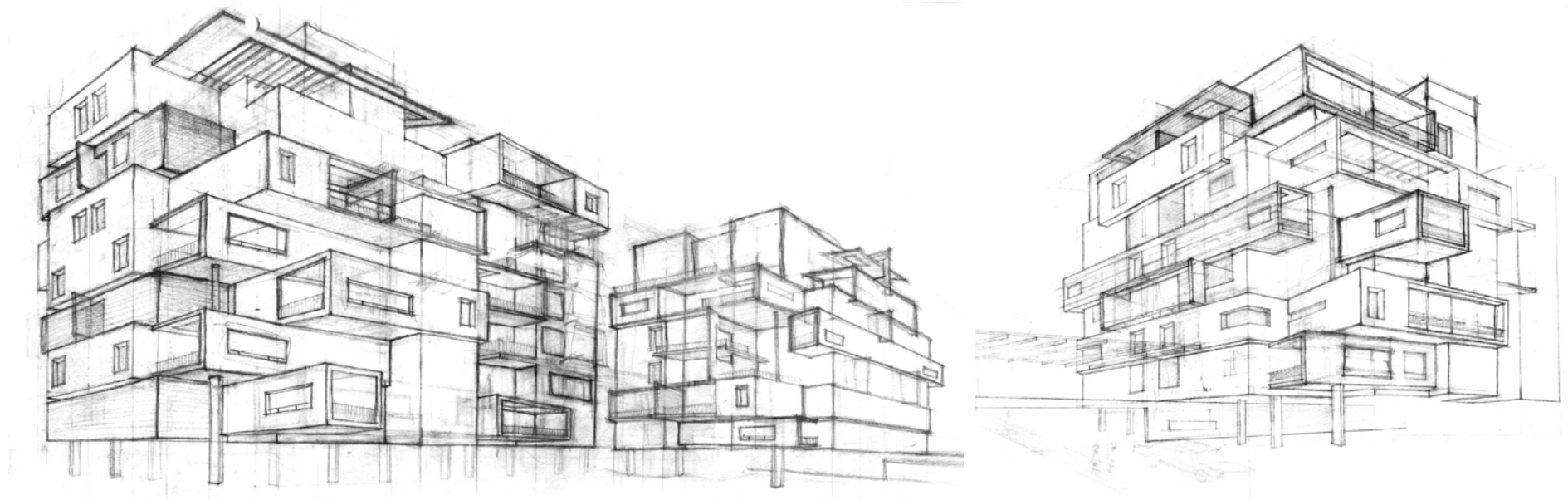
The project features an asymmetrical juxtaposition of blocks on different grids, giving the structure a dramatic façade.

OVERVIEW

Located in the city of Kolhapur, Wind Gates is strategically located to afford unobstructed views of the imposing New Palace Museum, a historic royal building in Kolhapur synonymous with the identity of the city, from different points. The façade has been designed specifically to mask the girth and verticality of the building through asymmetrical protrusion of blocks in different grids. The recessive order of the blocks leading up to the penthouse on the sixth and seventh floors gives the structure a unique skyline and affords wider sky views from the central inter-action spaces. While presenting a challenge in visualizing and constructing these masses, the recessive blocks give character to the structure. The terraces attached to the units are projected through cantilevers over the protruding boxes, further enhanced by the addition of fabricated pergolas and glass railing. The overall effect is to create an interesting façade. In addition to the climate responsive architectural design of Wind Gates, the building also incorporates ample daylight and natural ventilation to its design. Fly ash bricks were used during construction and a significant portion of the building has been devoted to vegetation to reduce the urban heat effect. The building also integrates wastewater recycling and solar energy among its green features.



The breeze that wafts in through the triple-height western and eastern wind pockets created at the Wind Gates apartment complex in Kolhapur, India. The floors of the common passages abutting every residence bear dark grey tiles, providing a striking contrast to the traditional rangoli patterns, and help to interrupt the monotony of the lengthy passage while enhancing traditional values.



CONCEPT SKETCHES

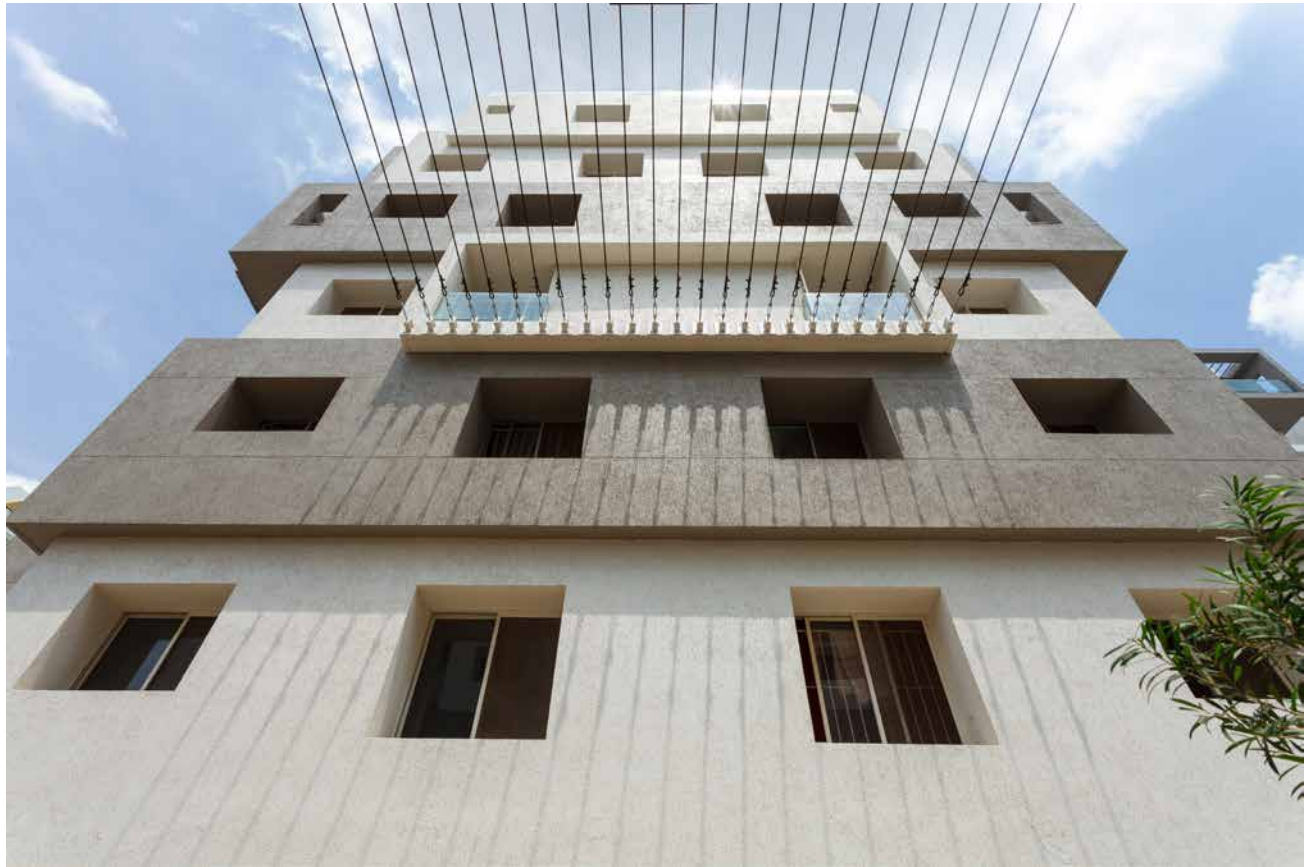


A coherent design, with respect to both climatology and site conditions, creates well-proportioned interior and exterior spaces. The building attains its name through the triple height wind pockets that allow the west wind to flow unhampered into the complex, amenity space and the internal faces of the two wings.

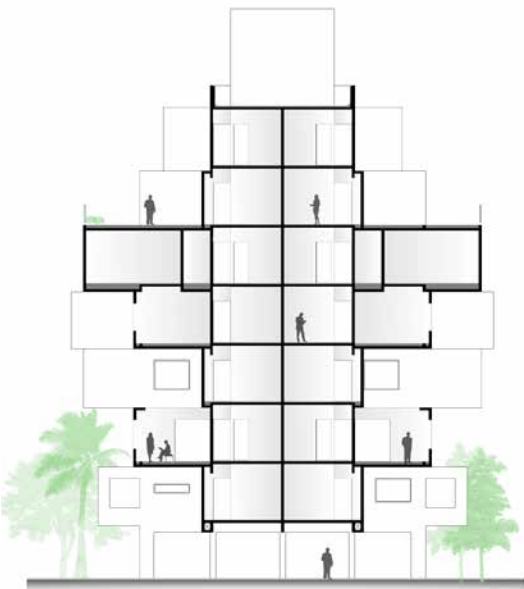




ELEVATION



For maximum floor space, the principal plot was divided into two wings, connected by wire rope pergolas at the entrance. They convey building connectivity, while at the same time contributing to balance the spaces and height proportions.



SECTIONAL DETAIL



During the construction, a significant number of existing plant life was preserved and is one of the highlights of the landscape. Flowerbeds as well as water bodies interspersed among trees such as mango, flame tree, jasmine, bur-flower tree, passion fruit, frangipani and bird cherry create a soothing ambience.

Situated centrally between the two wings are the common amenities including a multipurpose hall, gym and children's play park.

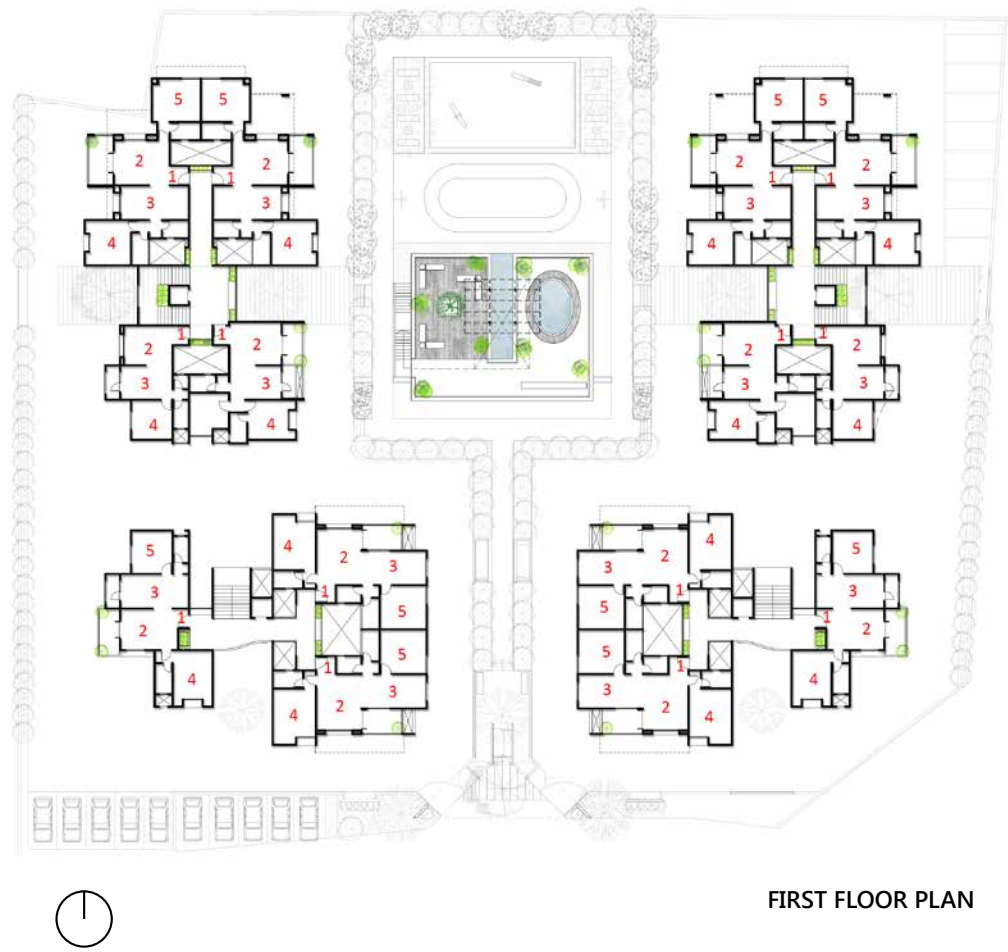




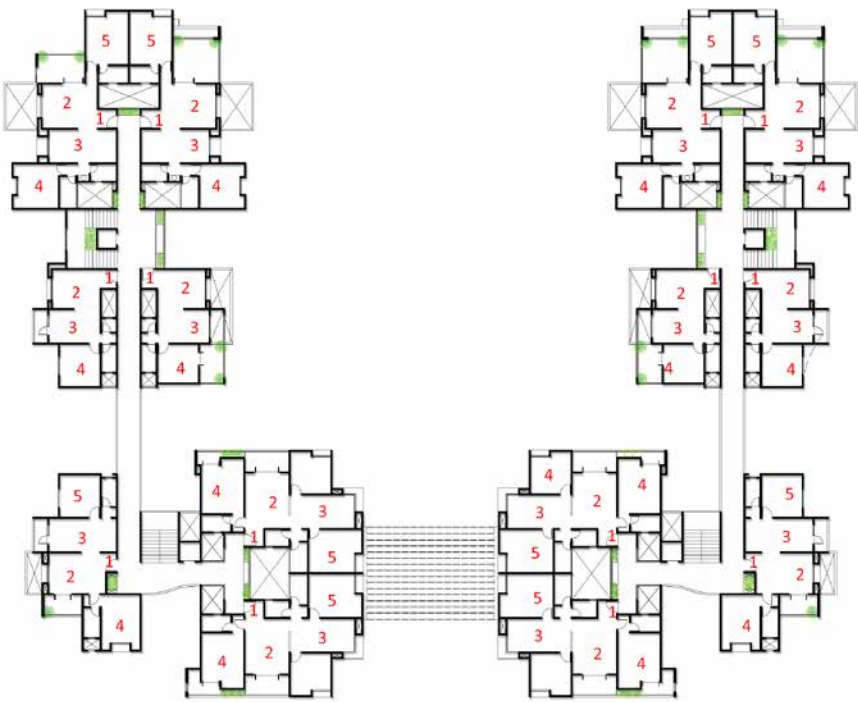
Seating pockets and overlooking passages are added to every floor level, promoting social interaction among neighbors and offering the senior residents space to intermingle.

A water sculpture located at the entrance of the complex reflects the basic concept of massing and blocking while creating a soothing ambience. The interconnectivity of spaces within the compound is balanced through landscaping.

Each individual dwelling space offers an entrance lobby that segregates the space from the common passages. Openly designed wide stairways encourage residents to access their individual dwellings or mutual interactive spaces through the stairways.



FIRST FLOOR PLAN



SECOND FLOOR PLAN

Materials

Flooring: Short blasted paving block (Exterior),
2'x2' Vitrified Tiles (Interior)
Wall Cladding: Ruf-Tuf Texture Sherwin
Light Fixtures: Imported from China
Bath Fixtures/ Sanitaryware:
Bath Fittings- Jaquar, Sanitaryware- Johnson
Furniture/Decor: Imported from China